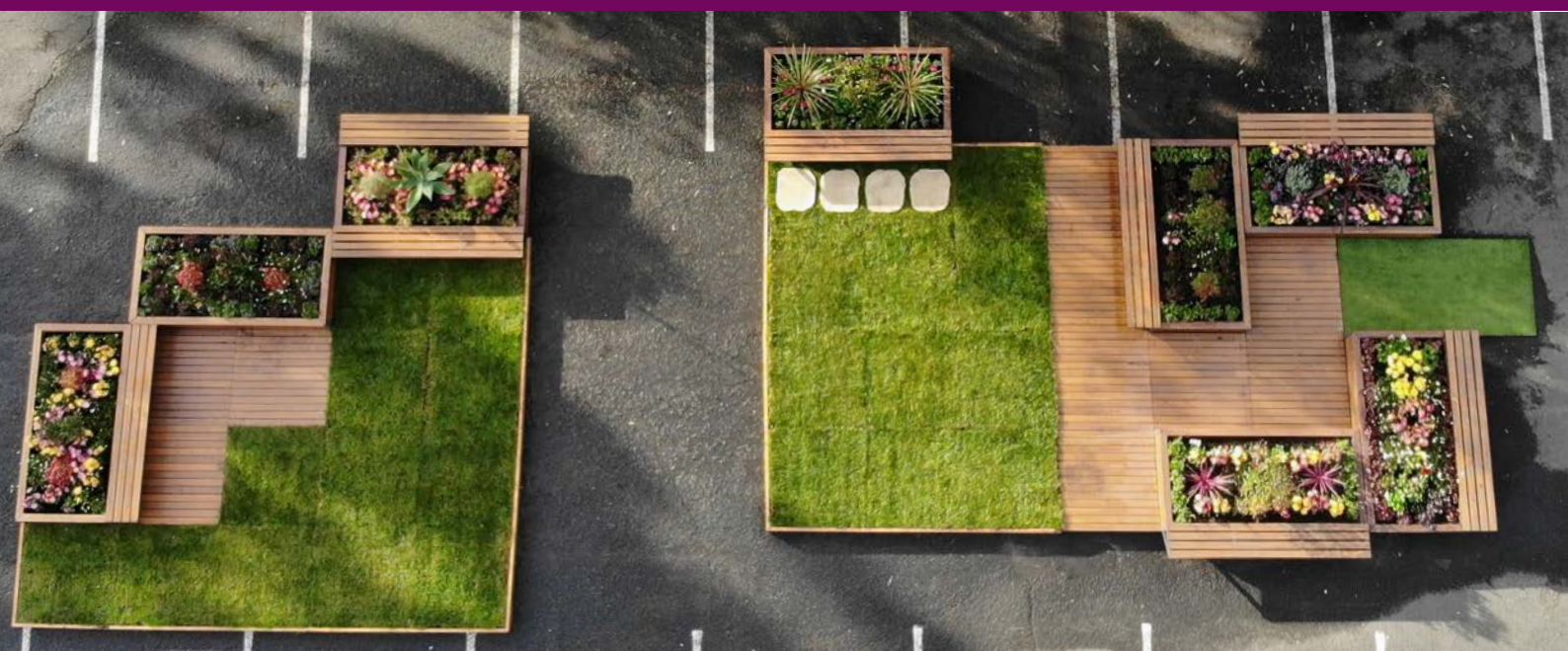


FUTURE VILLAGE MODULAR SERIES

Toy Blocks for Nature: A modular
System for creative urban design



MODULAR SERIES

Toy blocks for nature



Imagine building vibrant green spaces as easily as assembling toy blocks.



The **Future Village Modular Series** is designed for creative urban placemaking, offering a fully integrated suite of elements - garden trays, decking, planters, seating, and shade - all built around a consistent 1200mm x 1200mm module. This shared footprint enables seamless integration, fast installation, and flexible reconfiguration across rooftops, podiums, courtyards, and hardstand retrofits, with no need for excavation or structural alterations.

Every component is engineered for urban performance:

Sub-surface irrigation

Integrated water storage

Conscious materials (upcycled manufacturing off-cuts)

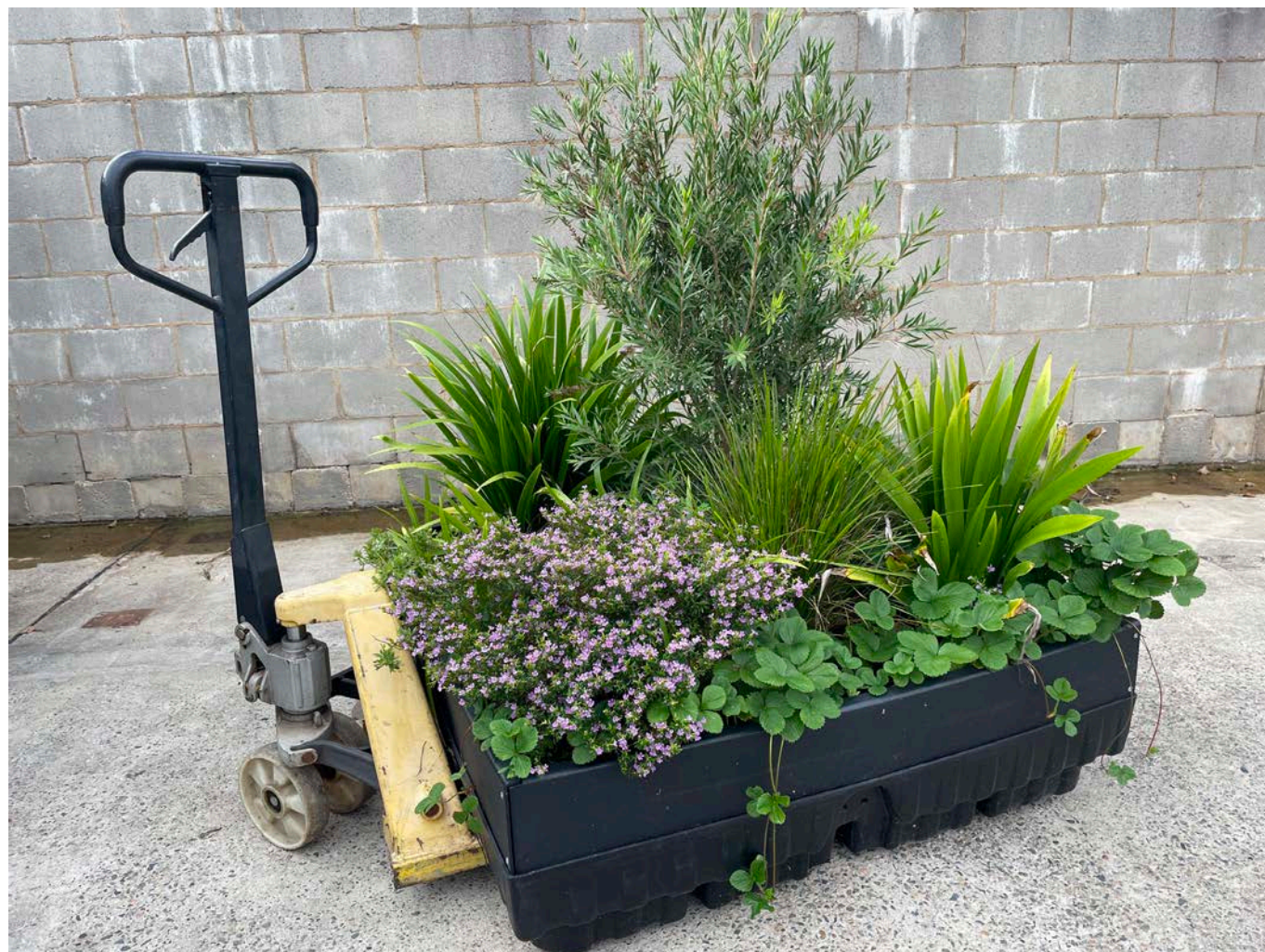
Custom add-ons and finishes for site-specific expression

The Modular Series is a reconfigurable, transportable toolkit - perfect for temporary trials, permanent installations, and evolving site needs.

THE HERO: GARDEN TRAYS

Floating gardens that transform any hard surface into a lush, green oasis.

Bring greenery to rooftops, balconies, podiums, and courtyards with floating gardens that require no excavation. The modular design features integrated wicking and stormwater detention for effortless, adaptable installation.



Each tray is engineered for easy integration and adaptability:

Edging options: Choose from powder-coated steel, Colorbond, soft-fall, timber, or custom materials to tailor the perimeter finish to your project's style and safety requirements.

Multiple depths: Standard trays (220mm high) are ideal for turf and shallow-rooted plants, while deep trays (380mm high) provide greater soil volume for bush-like vegetation.

Transport & handling: Trays are designed for efficient logistics, stacking up to five turf units high for transport and easily moved on-site with a pallet jack or forklift, making installation and relocation straightforward.

Daisy-chain water connection: Internal water reservoirs can be filled efficiently from a single point in rows. This simplifies irrigation by enabling multiple trays to be topped up together, ensuring even water distribution across the installation.

MODULAR SERIES

Toy blocks for nature



Beyond their versatility, Garden Trays deliver measurable environmental benefits. By turning underused hardscapes into vibrant green zones, they help reduce the urban heat island effect - lowering ambient air temperatures by up to 12–14°C during extreme heat events and improving rooftop insulation. Integrated rainwater capture and detention, along with a sub-irrigation and wicking system, ensure healthy plant growth while managing stormwater runoff and reducing maintenance.



Whether used for long-term greening or temporary installations, these trays offer councils, architects, and developers a practical, scalable solution for cooling, beautifying, and humanising urban environments.

MODULAR SERIES

Toy blocks for nature



THE FULL MODULAR RANGE: COMPLEMENTING THE GARDEN TRAYS

The Future Village Modular Series is designed as a flexible, integrated system where garden trays are supported by a full suite of modular products. Each element shares a consistent 1200mm x 1200mm footprint, enabling seamless combinations for creative urban greening solutions across rooftops, podiums, courtyards, and hardstand retrofits.

Decking Trays

Modular decking with self-levelling feet and stormwater flow access creates safe, accessible pedestrian zones on uneven or hard surfaces, blending durability with flexibility.



Planters

Engineered for healthy, low-maintenance planting, these planters offer generous soil volume and integrated water reservoirs. Combine different sizes - including Large and Street Planters - to form green corridors, edge treatments, or striking standalone features.



Large Planter Add-Ons

Expand planter functionality with attachable seating, trellises, solar-ready canopies, and pavilion systems, transforming each unit into a versatile, multifunctional structure - no permanent footings required.



Tree Planters

Designed for hard surface settings where in-ground planting isn't possible, these deep-profile planters feature built-in water storage and wicking to support healthy tree growth.



Raised Decks

Create modular seating platforms, stages, or surface transitions with options in multiple heights and materials, all designed for seamless integration and rapid deployment. Also available in Sun bed.



Seating & Tables

Freestanding furniture built for public spaces, offering modular layouts, theft-resistant fixings, and robust materials to ensure long-lasting flexibility and comfort.



Accessibility Ramps

Smooth, accessible transitions between surface levels with ramping solutions available in various finishes, including decking, and fully compliant with AS 1428.1:2021 for inclusive design.

URBAN HEAT ISLAND

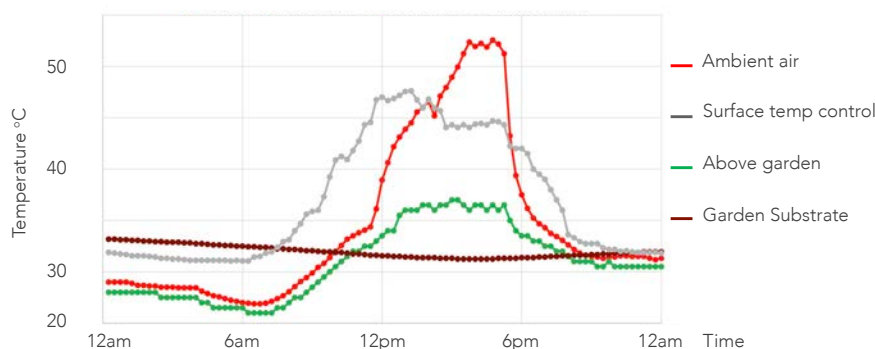
The urban heat island effect is an emerging threat to cities globally, with rising summer heat increasing building energy costs and becoming a significant health burden.

Urban greening is widely recognised as a key strategy to help reduce urban heat islands. However, many urban areas lack the space needed for traditional vegetation or opportunities to deliver targeted cooling.

Future Village addresses this challenge with innovative and sustainable solutions, designing and installing free-standing green infrastructure that brings cooling and greenery to built-up areas - all without the need for excavation.

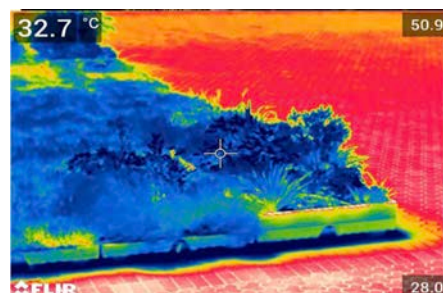
Ambient Air*

On days where ambient air temperature exceeded 35°C at control sites, the ambient air temperature was 12–14°C less at the Floating Garden sites.



Infrared analysis*

FLIR camera studies showcased the difference in plant species and mulch cooling properties in trays leading to the development of our cool plant and mulch library.



Infrared photos. Ambient temp 32.7 °C. Vegetation approx 28 °C. Paving maximum 50.9 °C

BIODIVERSITY

Integrating Future Village's modular **Garden Trays** and **Planters** into the built environment offers a powerful way to enhance urban biodiversity by creating vital pockets of habitat within hard, impervious landscapes. These products support a diverse range of native and pollinator-friendly plants, attracting bees, butterflies, and other beneficial insects that are essential for healthy ecosystems. By greening rooftops, streetscapes, and underutilised paved areas, these reconnect fragmented habitat corridors, providing stepping stones for species movement and breeding. This is particularly important in dense urban areas where green space is limited and traditional landscaping options are often impractical due to space, weight, or excavation constraints.

Beyond supporting individual species, the trays help foster more resilient urban ecosystems by encouraging soil microbial activity, promoting plant diversity, and improving local microclimates. The inclusion of water-retentive wicking systems ensures plants thrive even during dry periods, supporting consistent floral resources for wildlife throughout the seasons. As modular and relocatable systems, Future Village **Garden Trays** and **Planters** can be tailored to site-specific ecological goals, whether it's enhancing a green roof for stormwater management and habitat, or introducing nature into public plazas and laneways. In doing so, they transform sterile urban spaces into living infrastructure - bringing nature back into the city in a visible, scalable, and meaningful way.

RETROFITTING: UNLOCKING URBAN GREENING OPPORTUNITIES

Retrofitting with the Future Village Modular Series offers a transformative opportunity for cities, businesses, and communities to rapidly green existing built environments - without demolition, disruption, or major construction.

Why modular retrofitting with Future Village solutions works:

Non-Invasive Installation: The entire range can be placed directly on rooftops, podiums, courtyards, or hardstand surfaces, with no need for excavation, surface penetration, or structural alteration. This makes it ideal for upgrading underused or harsh urban spaces, even in heritage or high-density settings.

Instant Impact: Modular systems deliver immediate results. Floating gardens, planters, decks, and shade structures can be installed quickly, providing instant greenery, cooling, and amenity where it's needed most.

Flexible, Scalable Solutions: The consistent 1200mm x 1200mm footprint allows any combination of products to be retrofitted into complex sites - adapting layouts as needs change, and easily relocating or expanding installations over time.

Environmental & Community Benefits: Retrofitting with green infrastructure helps reduce the urban heat island effect, manage stormwater, improve air quality, and create new habitats for biodiversity, while also enhancing wellbeing and social connection in dense urban areas.

Cost and Carbon Savings: By upgrading existing spaces rather than demolishing and rebuilding, retrofitting minimises embodied carbon, reduces waste, and delivers long-term savings in energy and maintenance costs.



MODULAR SERIES

Toy blocks for nature



RETROFIT APPLICATIONS

Green Roofs & Balconies: Transform bare rooftops into lush, insulated gardens that reduce building energy use and extend roof lifespan.



Building 7 Rooftop - University of Technology Sydney, NSW

Podiums, Terraces & Courtyards: Add green amenity and shade to hard, sun-exposed surfaces, improving comfort and usability.



Terrace. Camberwell Grammar School, Melbourne VIC

MODULAR SERIES

Toy blocks for nature



Street-Level Greening: Retrofit car parks, plazas, and forecourts with modular planters, decks, and seating, softening urban landscapes and supporting community.



Forecourt, Rosebud, VIC

Temporary or Pop-Up Parks: Deploy modular elements for events, trials, or seasonal installations, then relocate as priorities shift.



Light Up Festival, St Mary's, NSW

Retrofitting with the Future Village Modular Series is a smart, sustainable way to bring nature back into the city - quick, flexible, and with lasting benefits for people and the environment.

URBAN MAKEOVERS: INSPIRING CHANGE THROUGH GREEN INNOVATION

Across Australia, Future Village's modular greening solutions are transforming underutilised hardscapes into vibrant, welcoming spaces. By harnessing the flexibility and adaptability of our garden trays and complementary modules, these projects showcase how rapid, non-invasive installations can deliver instant greenery, cooling, and amenity - revitalising city environments for communities, businesses, and visitors alike.

Explore the following urban makeovers to see the real-world impact of modular greening in action.

Blacktown Parklet: Cooling the Heart of the City

Install date: March 2020

Installed for permanent (reconfigured 2022) in partnership with Blacktown City Council

Patrick Street Plaza in Blacktown faced two major challenges: extreme heat from the urban heat island effect made the area inhospitable, and the lack of inviting public space led to safety concerns and antisocial behaviour. As a vital link between transport hubs and the Westpoint Shopping Mall, the plaza was often avoided by the community during hot summer days.



Future Village partnered with Blacktown City Council to deliver a transformative modular solution. The design featured **Large Planters** with integrated seating and **Tree Planter** forming the parklet's perimeter, while the central zone was filled with **Turf Trays** to create a welcoming green space. Additional inward-facing **seating** and a modular **Accessibility Ramp** ensured inclusivity and comfort for all visitors.

Installation was rapid - completed in just four days - minimising disruption and providing instant amenity. The modular system allowed for flexible pedestrian flow, with walking thoroughfares designed to prevent turf wear and accommodate the high volume of foot traffic, including those with shopping trolleys.

Community feedback drove further enhancements in 2021. The space was reimagined with improved pedestrian access, a new **Canopy** attached to the **Large Planters** for shade and solar lighting, and a stand-up eating area with trellising for climbing plants. A dedicated children's play area, picket fencing, and additional shade sails created zones for family activities, library readings, and community events.

This dynamic parklet demonstrates the power of modular greening to cool urban environments, foster community connection, and transform previously neglected spaces into vibrant, safe, and welcoming destinations.

McKeon Road Closure Maroubra: A Coastal Transformation

Install date: September 2022

Installed for 6 months in partnership with Randwick City Council

In partnership with Randwick Council, Future Village delivered a vibrant urban makeover on McKeon Street, Maroubra - transforming a closed roadway into a welcoming pedestrian plaza just steps from the beach. The project was part of a Streets as Shared Spaces initiative, designed to create a flexible, community-focused environment for gathering, dining, and play.



McKeon Street, Maroubra before closure and after activation

This temporary plaza was brought to life with a carefully curated mix of modular elements:

Garden Trays planted with native species softened the hardscape and brought instant greenery to the heart of the precinct.

Raised Decking provided a performance stage and flexible seating zones, while also anchoring hurricane-rated umbrellas to withstand coastal winds.

Planters and GRC pots with water reservoirs and wicking systems, added layers of lush planting and defined the plaza's edges.

Outdoor Furniture including **benches**, **cafe tables**, **stand-up tables**, and a dedicated children's play area created spaces for relaxation, socialising, and community events.

The modular system enabled rapid installation - just five days from start to finish - delivering immediate amenity and cooling to the area. Synthetic turf and native vegetation further enhanced comfort and usability, while the flexible design allowed for future reconfiguration or relocation as community needs evolve.

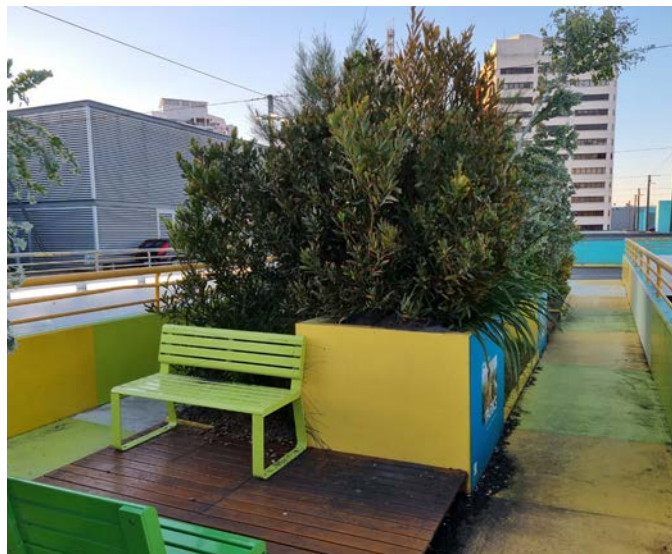
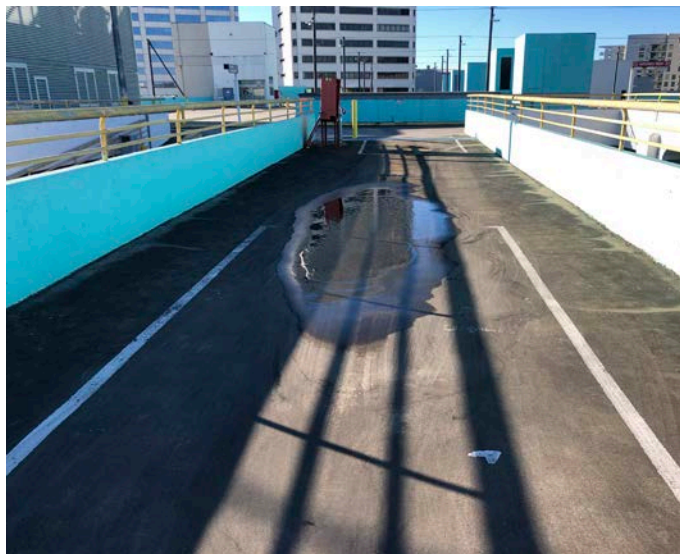
This project demonstrates the power of modular greening to revitalise underused urban spaces, providing a practical, sustainable solution that connects people with nature and each other.

Floating Roof Garden, Bondi Junction: Greening Above the City

Install date: December 2021

Installed - permanent in partnership with NSW Govt, Waverley City Council & UNSW

As part of the NSW Greening the City Innovation program, Waverley Council, in partnership with UNSW, set out to demonstrate how even the most exposed and challenging urban spaces can be transformed into thriving gardens. The Floating Roof Garden at Westfield Bondi Junction is a compelling example of what's possible with the Future Village modular system.



To overcome strict site constraints - including a 2-metre height restriction and no crane access - every component, from soil and plants to **Garden Trays**, **Decking Trays**, and **Tree Planters**, was transported individually via trailer, requiring 20 round trips. The modular nature of the system enabled a rapid, three-day installation, with all elements designed to sit directly on the rooftop's surface without the need for structural alterations.

Garden Trays and **Turf Trays** formed the core of the green space, supporting native vegetation selected for resilience in harsh rooftop conditions. The trays' integrated water reservoirs and wicking systems, plumbed in and set on timers, ensured efficient irrigation and minimal maintenance. **Decking Trays** and **Tree Planters** with adjustable feet created level surfaces and added vertical interest, while custom powder-coated metallic edging provided a refined finish.

A key goal was to trial the growth of remnant native vegetation from Sydney's Eastern Suburbs in a rooftop setting. The team conducted a three-month grow-out to determine the optimal soil profile and mulch for water retention, resulting in flourishing plantings that exceeded expectations even after a year of exposure to wind, sun, and heat.

The project's flexible design allowed for creative expression, with **Tree Planters** in varying heights and colours, and the entire installation able to be reconfigured or relocated as needed. The result is a vibrant, biodiverse oasis that not only cools and beautifies the rooftop but also provides a valuable template for scalable, transferable urban greening solutions.

This Floating Roof Garden demonstrates the adaptability and performance of the Future Village modular range - delivering cooling, biodiversity, and community amenity in places previously considered impossible to green.

Floating Garden, Wollongong: A Curved Green Oasis

Install date: September 2022

Installed permanently in partnership with Wollongong City Council

Wollongong City Council challenged Future Village to re imagine a key pedestrian thoroughfare in Crown Street Plaza, with a unique brief: create a lush garden without a single square edge, and recycle as much material as possible from previous modular parklets. The result was the innovative **Floating Garden**, a project that overcame both design and environmental challenges to deliver a vibrant, community-focused space.



To achieve the organic, curved perimeter, the team developed a new method of stitching coir logs together and constructed custom internal topography off-site. **Garden Trays** and recycled **Turf Trays** formed the heart of the floating system, delivering reliable water supply to plants through integrated reservoirs and wicking trays - crucial for thriving greenery on sun-exposed, heat-absorbing bluestone pavers.

The garden's design addressed multiple site constraints: limited sunlight in winter, high heat in summer, and a strict requirement not to damage the plaza's surface. Wind tunnel effects and the need for cost-effective greening solutions led to the conversion of 200 and 100-litre metal drums into planters, each fitted with water reservoirs and wicking systems. These drums, combined with 20 cubic metres of soil and a mix of native and exotic plantings, created a continuous, immersive landscape.

A hessian netting secured the soil, while a full irrigation system ensured plant health. The modular approach allowed for rapid installation and future reconfiguration, with the garden remaining resilient and attractive even after several years - adapting to heavy use by converting turf to synthetic grass where needed.

This project demonstrates how **Garden Trays** and modular greening can transform even the most challenging urban sites, delivering cooling, biodiversity, and a welcoming oasis for the community - all without excavation or permanent alteration to existing infrastructure.

MODULAR SERIES

Toy blocks for nature



CONTACT US

At Future Village, we're on a mission to retrofit grey spaces and bring nature back into our cities. We believe the transformation of underused rooftops, courtyards, and hardscapes into vibrant, green destinations is only possible through strong partnerships. If you share our vision for urban greening, we'd love to connect and explore how we can work together to make a real impact.

Reach out to our team for tailored advice, pricing, and technical support:

Luli Castello	+61 481 579 011	luli@futurevillage.com.au
Peter Casimaty	+61 406 072 229	peter@futurevillage.com.au
Ben Perry	+61 425 324 256	ben@futurevillage.com.au